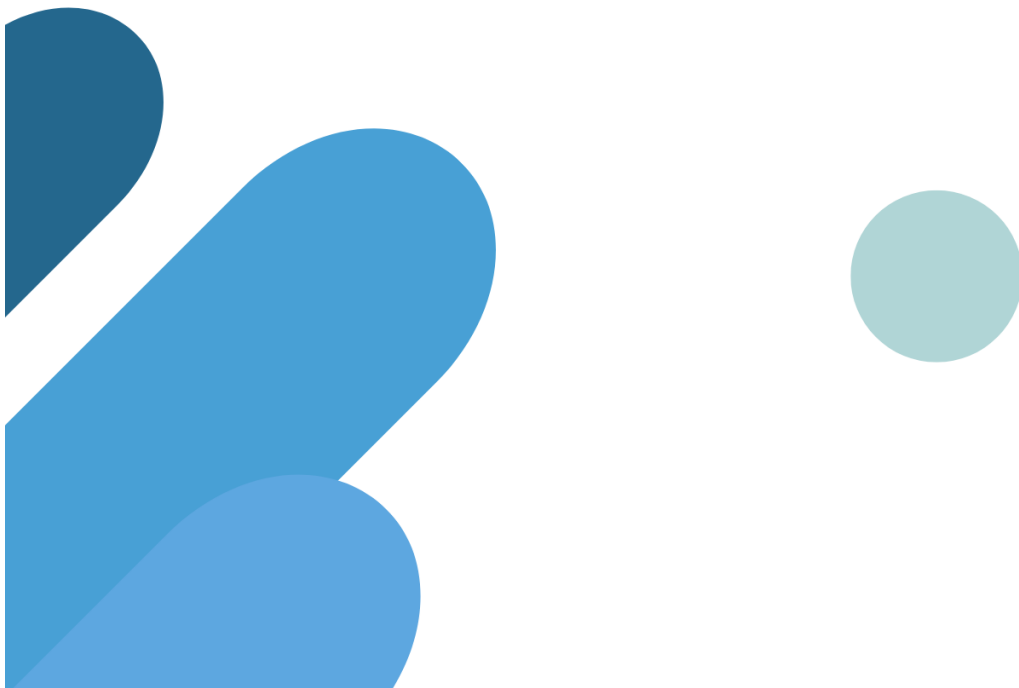




DECLARED 2023
RISE UP TO THE CHALLENGE

Conference Program
1st-3rd November



Conference Day 1

Thursday, November 2, 2023

Time	Session	Presenters	Room
0800	Registrations		L1
0900	Welcome*	A/Prof Annmarie Hosie and A/Prof Gideon Caplan	Leighton Hall
0910	Keynote 1*	Associate Professor Esther Oh , Johns Hopkins, US - <i>Translating Knowledge into Action: Creating a Health Ecosystem to Advance Delirium Prevention and Care</i>	Chair: A/Prof Gideon Caplan Online moderators: Claire Yip & Dominique Zhi Hao
0935	Plenary 1*	Mr Adam Kwok , Australia - <i>A Partner's Experience</i>	Claire Yip & Dominique Zhi Hao
0950	Plenary 2*	Ms Maria Senatore , Australia - <i>A Daughter's Experience</i>	Dominique Zhi Hao
1005	Plenary 3*	Professor Alasdair MacLulich , University of Edinburgh, UK – <i>Responding to Distress in Delirium</i>	Low
1030	Q and A		
1040	Morning Tea		L1
1110	Plenary 4*	Top Scoring Abstracts 1. Professor Thomas Fischer - <i>Clinical decision making about pain in patients with delirium</i> 2. Dr. Andrew Daltry - <i>A Systematic Review of the validity of delirium screening tools in culturally and linguistically diverse and Aboriginal and/or Torres Strait Islander Peoples</i>	Leighton Hall Chair: Prof Andrew Teodorczuk Online moderators: Claire Yip & Dominique Zhi Hao Low
1140	Plenary 5*	Dr Leanne Boehm and Brenda Pun , Vanderbilt Medical Centre, US – <i>Latest on the ABCDEF bundle</i>	
1205	Q and A		
1215	Lunch and Poster presentations		L1, Leighton Hall
1315	Symposium, Leighton Hall* <i>Digital innovations in delirium severity measurement and prediction</i> Chair – Dr. Heidi Lindroth & Kaitlin Kramer Join us for an engaging symposium featuring Dr. Heidi Lindroth and Kaitlin Kramer. Participants attending this session will learn about current approaches to rating delirium severity and how these may be implemented at the bedside (and their challenges!). By the end of the session, participants will be able to describe digital innovations in delirium severity measurement and delirium prediction in the perioperative setting. Online moderators: Claire Yip & Dominique Zhi Hao Low	Symposium, Galleries 1: <i>Aussie RCTS: The Quest for Pharmacological Delirium Therapies- Are we any closer?</i> Dr. Monique Boord (Chair), Dr. Anita Nitchingham, Prof Meera Agar & A/ Prof Peter Lange Join us for an engaging symposium featuring A/Prof Meera Agar, A/Prof Peter Lange and Dr Anita Nitchingham presenting their research on pharmacological Randomised Controlled Trials (RCTs) for delirium prevention and management. Following individual presentations, engage in a dynamic panel discussion and Q&A session covering critical topics such as trial design, selecting trial outcomes, lessons learned, and future directions in pharmacological management for delirium.	Workshop, Galleries 2: <i>Mapping nursing practice against the Delirium Standard</i> A/Prof Annmarie Hosie, Soumaia Lowery, Penny Casey, Amy Montgomery Calling DECLARED 2023 nurses! This 90-minute interactive workshop is to collaboratively map nursing practice and the Delirium Standard . Working in small groups and using the Registered Nurse Standards for Practice , we will begin the process of articulating nurses' professional role and responsibilities in providing interdisciplinary Delirium Standard-aligned care. Workshop outputs will include a summary of the findings for participants and a published workshop report.

1445	Afternoon tea		L1
1500	Abstract Presentations Leighton Hall* Chair: Amy Montgomery 1. 1500-1515- <i>Trends in delirium coding rates in older hospital inpatients in England and Scotland: whole population data comprising 7.7M inpatients per year show 4-fold increases between 2012 and 2020-</i> Prof Alasdair MacLulich 2. 1515-1530- <i>Brain dynamics during delirium-</i> Dr. Eamonn Eeles 3. 1530-1545- <i>A new classification of comorbidities for delirium risk in CKD patients admitted to ICU-</i> Dr. Jessica Nealon 4. 1545-1600- <i>Delirium and incident dementia: Results from a large retrospective cohort study of hospital patients in New South Wales, Australia-</i> Dr. Emily Gordon Online moderators: Claire Yip & Dominique Zhi Hao Low	Abstract Presentations Galleries 1 Chair: Dr. Emily Cull 1. 1500-1515- <i>The relationship between ICU delirium-related distress, delirium subtype, and post-traumatic stress disorder-</i> Dr. Leanne Boehm 2. 1515-1530- <i>Partnering with carers in the prevention of delirium-</i> Dr. Alison Craswell 3. 1530-1545- <i>Investigating the prevalence and outcomes of dysphagia in patients with delirium-</i> Sienna James 4. 1545-1600- <i>Junior nurses' experiences of implementing non-pharmacological interventions for delirium management: a qualitative descriptive study-</i> Siyao Duan	Abstract Presentations Galleries 2 Chair: Melinda Webb-St Mart 1. 1500-1515- <i>Delirium prevalence and practices across Australian and New Zealand Hospitals-</i> Dr. Shiny Huang 2. 1515-1530- <i>Effects of using music intervention and earplugs in preventing delirium in mechanically ventilated patients-</i> Ting-Jhen Chen 3. 1530-1545- <i>Driving quality in delirium care in palliative care units: the MODEL-PC study-</i> Dr Nameer van Oosterom 4. 1545-1600- <i>Securing knowledge: Patients with delirium and 'security specials'-</i> Bridget Riggs
1600	Plenary 6*	Professor Babar Khan , Indiana University School of Medicine, US - <i>Life after the ICU-Doom and Gloom or Hope and Possibility?</i>	Leighton Hall Chair: Professor Meera Agar
1625	Plenary 7*	Associate Professor Gen Shinozaki , Stanford University School of Medicine- <i>The novel bispectral EEG (BSEEG) device for detection of delirium and prediction of patient outcomes</i>	Online moderators: Claire Yip & Dominique Zhi Hao Low
1645	Q and A*		
1700	Day 1 Close before Social Gathering		
1700	ADA Meeting		Leighton Hall

*Face to face + Virtual

Conference Day 2

Friday, November 3, 2023

Time	Session	Presenters	Room
0800	Registrations		L1
0900	Welcome*	Dr Anita Nitchingham	Leighton Hall Chair: Dr. Anita Nitchingham Online moderators: Claire Yip & Dominique Zhi Hao Low
0905	Keynote 2*	Professor Daniel Davis , University College London, UK - <i>Population outcomes after delirium: The what, who, when and why.</i>	
0930	Plenary 8*	A/Professor Niccolo Terrando , Duke University, US- <i>Neuroimmune mechanisms in delirium superimposed on dementia</i>	
0955	Plenary 9*	Professor Robert Sanders , University of Sydney, Australia - <i>Mechanisms of Postoperative Delirium</i>	
1020	Plenary 10*	Top Scoring Abstracts 3. Amy Montgomery- <i>The Delirium Objective structured clinical examination Education (DOE) randomised controlled trial: comparing The DOE Package to standard education for post-registration nurses in Australia</i> 4. Dr. Monique Boord- <i>Evidence for neurophysiological patterns predisposing to delirium subtypes: and EEG and ERP study.</i>	
1050	Q and A		
1100	Morning Tea	L1	
1120	Symposium Leighton Hall* <i>Brain injury in delirium</i> Prof Robert Sanders & Thomas Payne This symposium will explore the use of human biomarkers to better understand the nature of brain injury associated with delirium. We will examine the benefits of pitfalls of biomarkers to understand pathophysiology, and the evidence for neuroaxonal and synaptic injury in delirium. Online moderators: Claire Yip & Dominique Zhi Hao Low	Symposium, Galleries 1: <i>Why use theory in interventions to improve delirium care? Recent examples from palliative care research</i> Prof Meera Agar (Chair), Imogen Featherstone, Dr. Mark Pearson, Dr. Gillian Jackson & A/Prof Annmarie Hosie. This symposium will offer insights into how theory can be used to develop interventions to prevent and manage delirium, and to successfully implement them in practice. A range of approaches used in recent palliative care research will be presented. This symposium aims to increase understanding of how theory can inform the development and implementation of interventions to improve delirium management and prevention.	Workshop, Galleries 2: <i>Partnering with consumers</i> Prof Alison Mudge & Adam Kwok This workshop is suitable for people who have experienced delirium, their caregivers, health professionals, healthcare managers, academics and policy partners. Facilitators will allow participants to reflect on their own experiences as consumers and facilitate discussion drawing on the group's past experiences and future opportunities for authentic engagement with consumers to improve community awareness, health practitioner education, service improvement and research in delirium.
1250	Lunch		L1
1345	Abstract Presentations Leighton Hall* Chair: A/Prof Gideon Caplan 1. 1345-1357- <i>Performance of the 4AT in delirium detection in palliative care: a diagnostic</i>	Abstract Presentations Galleries 1 Chair: Kellie Flowers 1. 1345-1357- <i>Exploring antipsychotic prescribing patterns and behaviours for</i>	Abstract Presentations Galleries 2 Chair: Annie Hepworth 1. 1345-1357- <i>A meta-analytic review on predisposing factors</i>

	<p><i>test accuracy study in an inpatient hospice setting-Prof Alasdair MacLulich</i></p> <ol style="list-style-type: none"> 2. 1357-1409- Measuring phenomenal consciousness in the diagnosis of delirium. A narrative review of candidate tools-Dr. Eamonn Eeles 3. 1409-1421- Differentiating encephalitis from delirium of unknown cause in older adults: An analysis of defining features and outcomes-Dr. Veronica Elias 4. 1421-1433- Magnetic Resonance spectroscopy (MRS) study to assess metabolomics during delirium-Susanna Li 5. 1433-1445- Neurological impairment in critically ill patients on dialysis: A feasibility study-Tasha Jawa <p>Online moderators: Claire Yip & Dominique Zhi Hao Low</p>	<p><i>people with delirium: A systematic literature review-Dr. Emily Tomlinson</i></p> <ol style="list-style-type: none"> 2. 1357-1409- Whole-of-health service performance against Australian care standards: a point prevalence study-Prof Alison Mudge 3. 1409-1421- Using an implementation strategy to improve guideline-adherent delirium care in hospices-Dr. Gillian Jackson 4. 1421-1433- The Use of Valid and Reliable Screening Tools for Detecting Delirium Postoperatively in Older People-Dr. Rami Aldwikat 5. 1433-1445- Implementing a Nurse Led Delirium & Dementia Service- Bridging the gap from acute care to post discharge support-Laura Beth White 	<p><i>for delirium motor subtypes-Prof Hannah Keage</i></p> <ol style="list-style-type: none"> 2. 1357-1409- Contextual factors in Delirium risk prediction and hospital length of stay: an Australian health service experience-Swapna Gokhale 3. 1409-1421- Person-Centred Care: Enablement and Empowerment in Aged Care project-Dasha Riley 4. 1421-1433- Implementing Integrated & Collaborative care in older persons – “Cairns Delirium Clinic”-A/Prof Ajay V Macharouthu 5. 1433-1445- Developing Delirium meme clinical care standards – extending reach and impact-Prof Andrew Teodorczuk
1445	Afternoon tea L1		
1515	Plenary 11*	Debate: Interpersonal interventions for delirium are better than technological Professor Babar Kahn and Amy Montgomery (Pro), & Dr. Eamonn Eeles and Dr. Heidi Lindroth (Con)	Leighton Hall Chair: A/Prof Gideon Caplan Online moderators: Claire Yip & Dominique Zhi Hao Low
1615	Announcing of DECLARED 2025*	A/Professor Ajay V Macharouthu	
1620	‘Deliriumologist of the Year’ & Close*	Professor Andrew Teodorczuk & Associate Professor Annmarie Hosie	

*Face to face + Virtual